

## Installing the SureFlap<sup>®</sup> Microchip Cat Flap into a Wall



*Where you are making holes through the wall of your property please consult a qualified builder. Protective clothing (gloves, eye & ear protection etc.) should be worn when carrying out the installation.*

**Note:** *When planning the installation of SureFlap into a wall remember that you may need to remove SureFlap in the future to replace the door or upgrade to a newer model. With this in mind do not glue the main assembly of SureFlap to the wall as removing it will be difficult and could damage the surface of your wall.*

For installation of SureFlap in your wall we recommend using the following accessories:

### **SureFlap Mounting Adaptor**

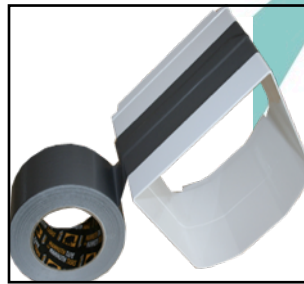
### **SureFlap Tunnel Extender**

1. Choose your mounting position on the wall so that your cat has easy access through the flap and into the tunnel from outside.
2. Mark a 6<sup>3</sup>/<sub>4</sub>" x 6<sup>3</sup>/<sub>4</sub>" square on the wall at the position of the tunnel.
3. Make the hole through the wall using appropriate tools and ensure that the tunnel is horizontal. A slight slope downwards from the inside of the house to the outside will ensure any rain runs out of the tunnel.
4. Apply superglue to the four tabs of the tunnel extender as shown in Figure 1 and fit the tunnel extenders together. When the glue has dried apply weatherproof tape to the outside of the tunnel as shown in Figure 2.
5. Follow step 4 to bond all of the tunnel extenders together – **remember do not glue the tunnel extender to the tunnel of SureFlap, just use tape for this joint when you come to it.**
6. Take one of the mounting adaptors and drill 4 holes in it – these four holes are for the screws that will hold SureFlap to the inside wall of your house (screws not included). You can put the four screws where you like around the perimeter of the mounting adaptor. See Figure 3.
7. Now take the two shortest screws from the SureFlap box and using a washer, screw the mounting adaptor to SureFlap as shown in Figure 4.
8. Place SureFlap (with the mounting adaptor) in the hole in your wall on the inside of your house.
9. Mark the positions for the four screws through the holes you have made in the mounting adaptor. You will also need to remove some material from the wall to allow for the screw and washer which hold the mounting adaptor to the main assembly – this will ensure that the mounting adaptor fits flush with the wall. See Figure 5.
10. Drill the four holes in your wall using an appropriate drill bit to suit the construction of your wall and your chosen screws.

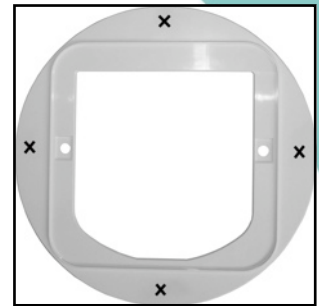
11. Tape the tunnel extender to the end of SureFlap's tunnel as shown in Figure 6.
12. Place SureFlap and the tunnel through the hole in your wall and screw it in place using the four screws through the mounting adaptor – see Figure 7.
13. On the outside of your house you will now have the tunnel sticking out of the wall – take the external frame and other mounting adaptor and place these over the end of the tunnel.
14. Mark the position of the two screw holes required to mount the external frame and then drill appropriate holes in the wall.
15. Screw the external frame and mounting adaptor to your external wall.
16. To hold the end of the tunnel in position we recommend using small screws to secure the tunnel to the external frame as shown in Figure 8.
17. We recommend putting some waterproof sealant between the tunnel and the external frame to prevent water getting into the wall cavity.



**Figure 1**



**Figure 2**



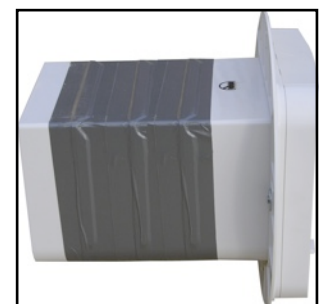
**Figure 3**



**Figure 4**



**Figure 5**



**Figure 6**



**Figure 7**



**Figure 8**